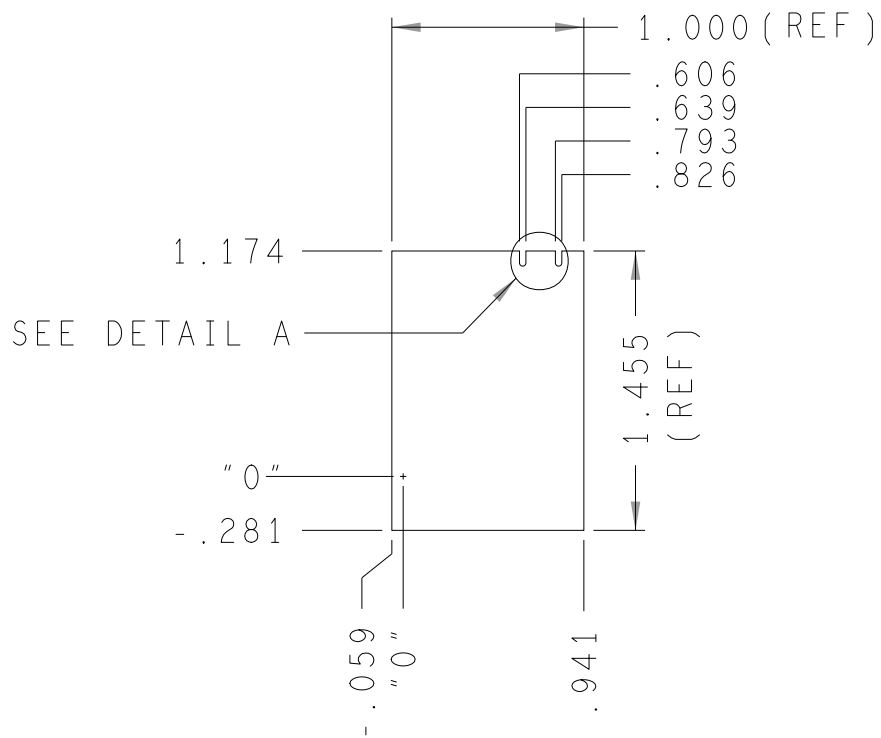
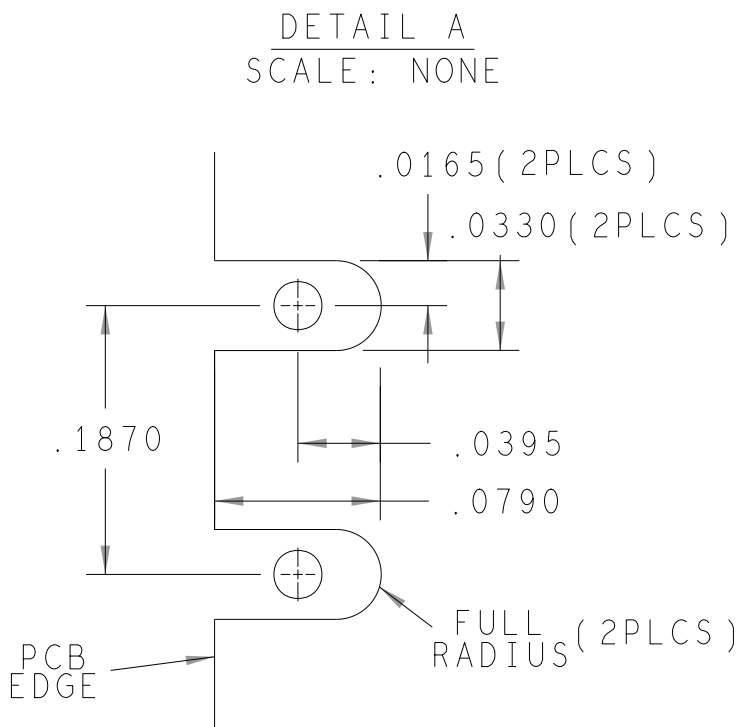


REVISIONS			
REV	DESCRIPTION	DATE	APPROVED
A	INITIAL RELEASE	26MAY17	R.GETZ
B	AS PER ECR-077197, ECR-077830, AND ECR-079975	25JUL18	T.CABILDO



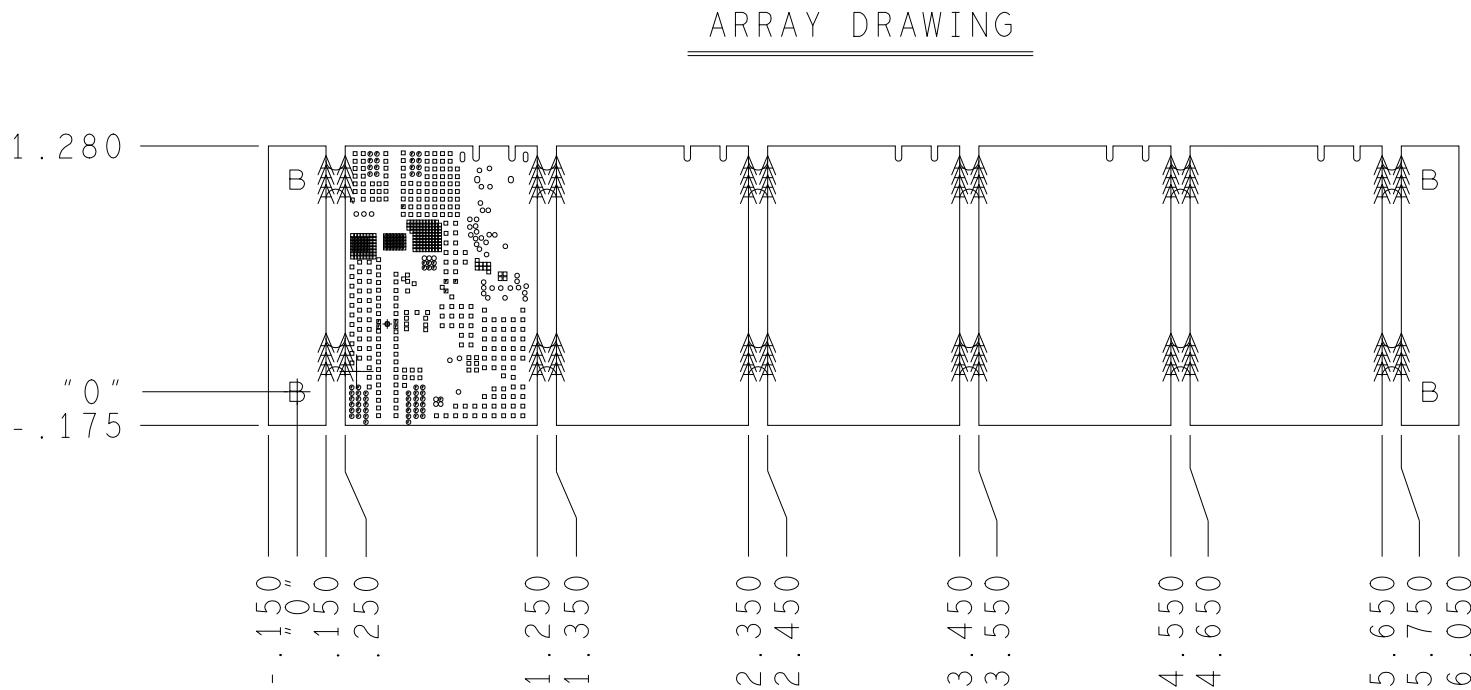
BOARD DIMENSIONS



HOLE TOLERANCE				
UNLESS SPECIFIED				
PLATED: +/- 3 MILS				
NON-PLATED: +/- 2 MILS				
FINISHED HOLES IN MILS				
ALL UNITS ARE IN MILS				
FIGURE	SIZE	PLATED	QTY	TOLERANCE/NOTES
•	8.0	PLATED	426	DIA MAX
•	8.01	PLATED	73	DIA MAX
•	10.0	PLATED	48	DIA MAX
•	10.01	PLATED	59	DIA MAX
A	25.0	NON-PLATED	96	
B	125.0	NON-PLATED	4	
•	34.0x26.0	PLATED	2	
•	51.0x24.0	PLATED	2	

SEE NOTE 14

SEE NOTE 14



CUSTOMER EVALUATION

PRIMARY SIDE

UNLESS OTHERWISE SPECIFIED DIMENSIONS ARE IN INCHES			APPROVAL		DATE		<div><div></div><div>ANALOG DEVICES</div></div> <div>WWM DIVISION 804 WOBURN STREET WILMINGTON, MA 01887</div>					
TOLERANCES			TEMPLATE ENGINEER N/A									
DECIMALS FRACTIONS ANGLES .XX -.010 --1/32 -- 2 .XXX -.005 .XXXX -.0050			HARDWARE SERVICES K. JABATAN		26MAY17		TITLE FABRICATION ADALM-PAMP CUSTOMER EVAL BOARD Z					
MATERIAL			HARDWARE SYSTEMS N/A									
			TEST ENGINEER N/A				SIZE C					
			COMPONENT ENGINEER A. CAUILAN-AGENA		26MAY17							
			TEST PROCESS N/A									
			HARDWARE RELEASE R. AMARILLE		26MAY17							
FINISH			DESIGNER J. PACAMARRA		26MAY17		FSCM NO		DRAWING NUMBER		REV	
			PTD ENGINEER R. GETZ		26MAY17		24355		09-046520		B	
			CHECKER N/A									
DO NOT SCALE DWG							SCALE 1/1				SHEET 1 OF 2	

4 | 3 | 2 | 1

D

D

SPECIFICATIONS:

- ROHS COMPLIANCE NOTE; HOMOGENOUS MATERIALS IN THIS BOARD SHALL BE COMPLIANT THE EU RoHS DIRECTIVE 2002/95/EC
- MATERIALS; ALL LAMINATES AND BONDING MATERIALS SHOULD BE SELECTED FROM IPC-4101 OR IPC-4103, MINIMUM Tg>170degC, Td>300degC, U.L. RATING OF 94 V-0
- MATERIAL FAMILY; ISOLA 370HR
- CLADDING; EXTERNAL LAYERS .5 OZ. COPPER, OVERPLATE TO 1.5 OZ. INTERNAL PLANE LAYERS 3 OZ. COPPER.

NOTE: IF THE LAYER STACKUP CONFLICTS WITH THE ABOVE CLADDING SPECIFICATIONS THEN THE LAYER STACKUP SHALL TAKE PRECEDENCE.
- SOLDER MASK; SHALL BE LIQUID PHOTOIMAGEABLE (LPI) APPLIED ON BOTH SIDES OVER BARE COPPER OR GOLD AND SHALL MEET IPC-SM-840 (LATEST REV.) CLASS 3. COLOR BLUE.
- SILK SCREEN; SHALL BE PERMANENT NON-CONDUCTIVE EPOXY INK, COLOR: WHITE SYNTHETIC INKJET PRINTING ALLOWED FOR DENSE BOARDS, COLOR: WHITE
- SURFACE FINISH; ENIG (ELECTROLESS NICKEL/IMMERSION GOLD) PER IPC-4552 LATEST REVISION
- INTENTIONAL SHORTS; IF SUPPLIED DATA INCLUDES A FILE "READ_ME.2", THEN INTENTIONAL NET SHORTS EXIST. CUSTOMER REVIEW AND APPROVAL IS REQUIRED IF SUPPLIED DATA REPORTS ANY CONDITION THAT DOES NOT MATCH "READ_ME.2" FILE PROVIDED.
- TEST REQUIREMENTS; 100% NETLIST ELECTRICAL VERIFICATION USING CUSTOMER SUPPLIED IPC-D-356 NETLIST FOR OPENS AND SHORTS WHEN "GERBER DATA" IS PROVIDED. THIS VERIFICATION ALSO REQUIRED FOR "ODB++" DATA PER EMBEDDED NETLIST.

C

C

B

B

A

A

REQUIREMENTS:

1. REFER TO IPC-6010 SERIES (LATEST REV.), CLASS 2 FOR FABRICATION UNLESS OTHERWISE SPECIFIED.
2. ACCEPTABILITY PER ANALOG DEVICES, INC. SPECIFICATION TST00115, (LATEST REVISION.)
3. MODIFICATIONS TO THE ARTWORK ARE NOT ALLOWED WITHOUT WRITTEN AUTHORIZATION.
4. HOLE PATTERN TOLERANCES FOR UNDIMENSIONED HOLES SHALL BE A DIAMETER OF 0.005 INCHES FROM THEIR TRUE POSITION.
5. PLATED HOLE WALL THICKNESS SHALL NOT BE LESS THAN 0.001 INCH MINIMUM AVERAGE, WITH NO READING LESS THAN .0008 BY CROSS SECTION.
6. HOLE DIAMETERS APPLY AFTER PLATING.
7. FINISHED CONDUCTOR WIDTHS SHALL NOT BE REDUCED FROM THE NOMINAL INDICATED ON THE MASTER PATTERN, BY MORE THAN THE CONDUCTOR THICKNESS.
8. MINIMUM DESIGN LINE WIDTH IS .012 INCH.
9. MINIMUM DESIGN SPACING IS .0088 INCH.
10. IF PAD SIZES PROVIDED ARE NOT LARGE ENOUGH TO MAINTAIN ANNULAR RING REQUIREMENT, MFR. MAY REQUEST APPROVAL TO TEAR DROP PADS TO MAINTAIN ANNULAR RING. (AT PAD TO TRACE INTERSECTION ONLY AND ELECTRICAL INTEGRITY MUST BE MAINTAINED.)
11. THIEVING MAY BE ADDED TO COMPENSATE FOR LOW COPPER DENSITY AREAS ON THIS DESIGN ONLY AFTER REVIEW AND APPROVAL FROM THE CUSTOMER:

A. THIEVING TO CARD EDGE, FIDUCIALS, NON-PLATED THROUGH HOLES, ALL OTHER FEATURES TO BE 0.200 INCH MINIMUM.

B. THERE SHALL BE NO THIEVING IN ANY AREAS FREE OF SOLDER MASK OR INTERNAL COPPER PLANES.
12. MFR. TO LEGIBLY ETCH OR STAMP/SCREEN WITH PERMANENT NON-CONDUCTIVE INK ON SECONDARY SIDE IN A CLEAR AREA UNLESS OTHERWISE INDICATED;

A. U.L. CODE-FLAMMABILITY RATING

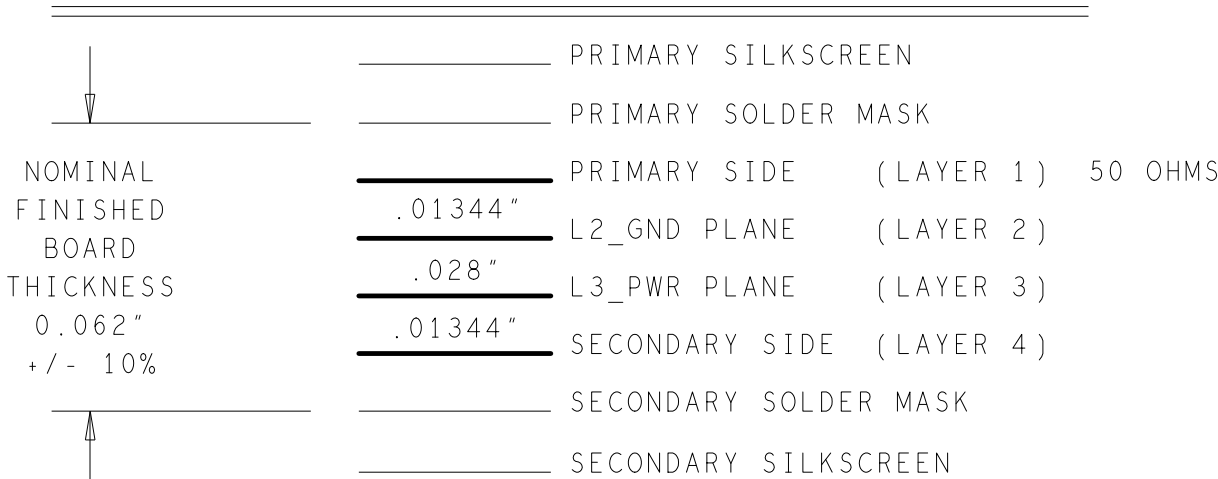
B. DATE CODE (STAMP).

C. LOT NUMBER

D. MFR LOGO

E. SUCCESSFUL ELECTRICAL TEST.
13. REPAIRS PER IPC-7711/21 (LATEST REV.) ARE ALLOWED. REPAIRS ARE NOT ALLOWED IN ANY AREA DEFINED ON GOLD_PRM AND/OR GOLD_SEC ARTWORK LAYERS WHEN PROVIDED IN GERBER OR ODB++ DATA.
14. THRU VIAS FILLED WITH NON-CONDUCTIVE EPOXY AND PLATED OVER.

4 LAYER STACKUP




CHARACTERISTIC IMPEDANCE = 50 OHMS +/- 10%
ARTWORK LINE WIDTH FOR
IMPEDANCE CONTROLLED LINES = 0.025"

CUSTOMER EVALUATION

4 | 3 | 2 | 1

PRIMARY SIDE

		ANALOG DEVICES		WWM DIVISION 804 WOBURN STREET WILMINGTON, MA 01887	
SIZE	FSCM NO	DRAWING NUMBER		REV	
C	24355	09-046520		B	
SCALE 1/1				SHEET 2 OF 2	